



Beaufort County Public Works
Stormwater Infrastructure
Project Summary

Project Summary: Beaufort County Government Center

Activity: Routine/Preventive Maintenance

Duration: 11/16/18-08/26/19

Narrative Description of Project:

Project improved 242 L.F. of drainage system. Cleaned out (1) catch basin. Jetted 242 L.F. of channel pipe. Repaired sinkholes. Installed grout and a reinforced liner to prevent future pipeline failures. Replaced brick pavers in parking lot. Handseeded for erosion control.

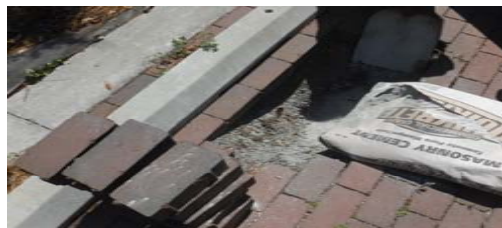
2018-564A / Beaufort County Government Center

	Labor Hours	Labor Cost	Equipment Cost	Material Cost	Contractor Cost	Indirect Labor	Total Cost
AUDIT / Audit Project	3.0	\$65.37	\$0.00	\$0.00	\$0.00	\$0.00	\$65.37
CLJS / Cleaned up jobsite	10.0	\$198.60	\$82.28	\$34.20	\$0.00	\$122.10	\$437.18
CPJ / Channel Pipe - Jetted	6.0	\$133.68	\$114.96	\$25.80	\$0.00	\$86.04	\$360.48
DEBRIS / Debris Removal	32.0	\$679.76	\$73.12	\$16.32	\$0.00	\$309.36	\$1,078.56
HAND / HANDSEEDDED	75.0	\$1,800.03	\$517.42	\$314.39	\$0.00	\$397.38	\$3,029.22
HAUL / Hauling	30.0	\$652.23	\$288.30	\$1,068.42	\$0.00	\$294.55	\$2,303.50
LR / Level Road	18.0	\$391.56	\$36.42	\$15.96	\$0.00	\$178.20	\$622.14
NONPRO / Non-Professional Services	0.0	\$0.00	\$0.00	\$0.00	\$26,315.00	\$0.00	\$26,315.00
PP / Project Preparation	36.0	\$734.62	\$115.20	\$59.88	\$0.00	\$191.70	\$1,101.40
PROFS / Professional Services	0.0	\$0.00	\$0.00	\$0.00	\$131,625.00	\$0.00	\$131,625.00
PRRECON / Project Reconnaissance	15.0	\$297.90	\$82.28	\$92.54	\$0.00	\$122.10	\$594.82
RDSW / Street/Road Sweep	15.0	\$329.95	\$18.00	\$6.84	\$0.00	\$82.35	\$437.14
SC / Sediment Control	15.0	\$318.54	\$22.32	\$15.00	\$0.00	\$165.42	\$521.28
SPSWI / Special Project - SWI	20.0	\$393.50	\$36.00	\$37.59	\$0.00	\$0.00	\$467.09
SR / Sinkhole repair	43.0	\$911.82	\$95.11	\$104.72	\$0.00	\$380.25	\$1,491.90
UTLOC / Utility locates	0.5	\$12.35	\$0.00	\$0.00	\$0.00	\$6.62	\$18.97
2018-564A / Beaufort County Government Center Sub Total	318.5	\$6,919.91	\$1,481.41	\$1,791.66	\$157,940.00	\$2,336.06	\$170,469.05
Grand Total	318.5	\$6,919.91	\$1,481.41	\$1,791.66	\$157,940.00	\$2,336.06	\$170,469.05

Before

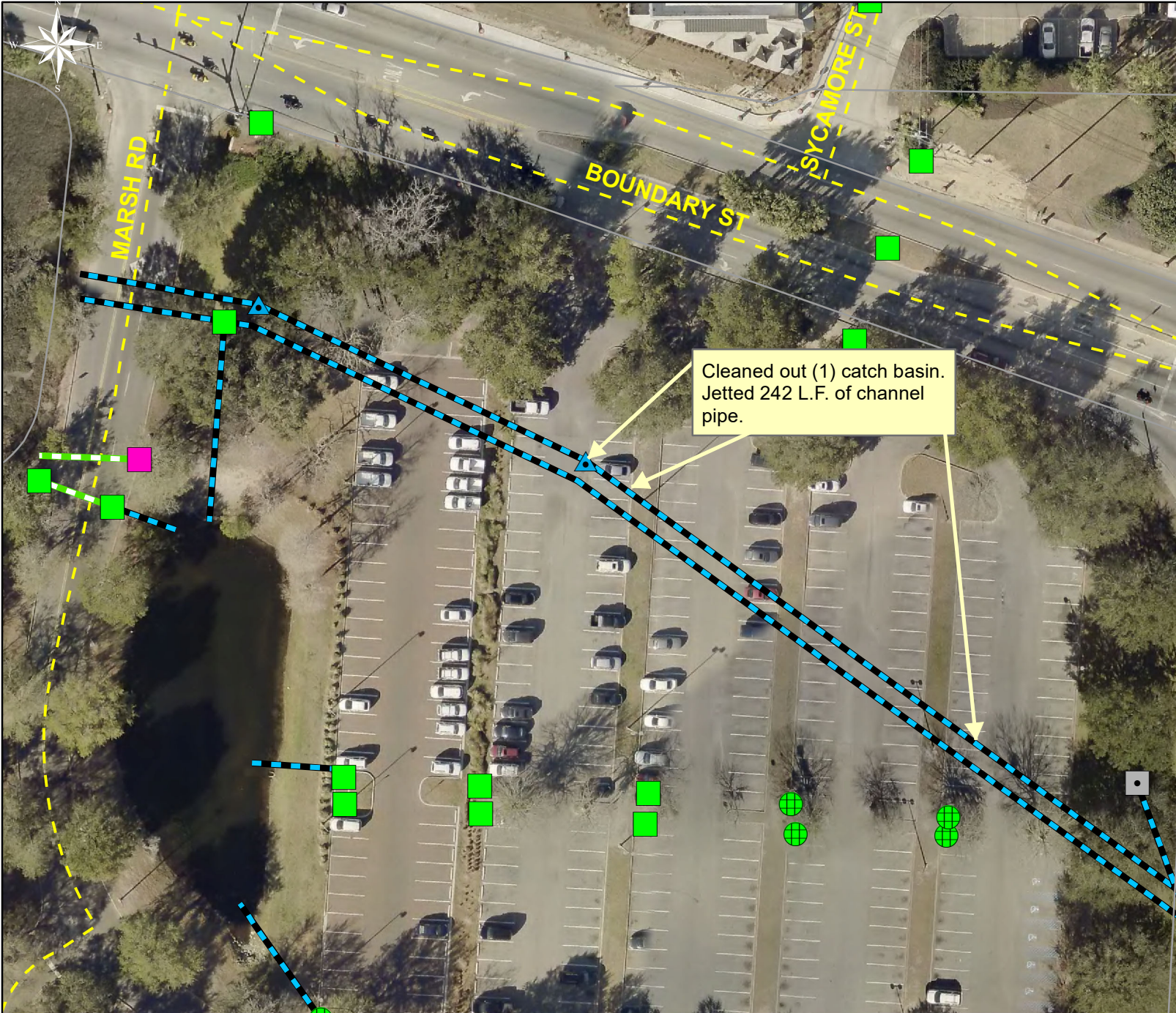


During



After





Project: Beaufort
 County
 Government
 Center Map #1

Activity: Routine/
 Preventive
 Maintenance














Project #:
 2018-564A

Township/SW Dist:
 City Of Beaufort/1

Completed:
 August 2019

Legend

Drainage Type

-  Access Pipe
-  Bleeder Pipe
-  Channel Pipe
-  Channel
-  Stream
-  Crossline Pipe
-  Driveway Pipe
-  Lateral
-  Lateral Pipe
-  River
-  Road Pipe
-  Roadside
-  Roadside Pipe

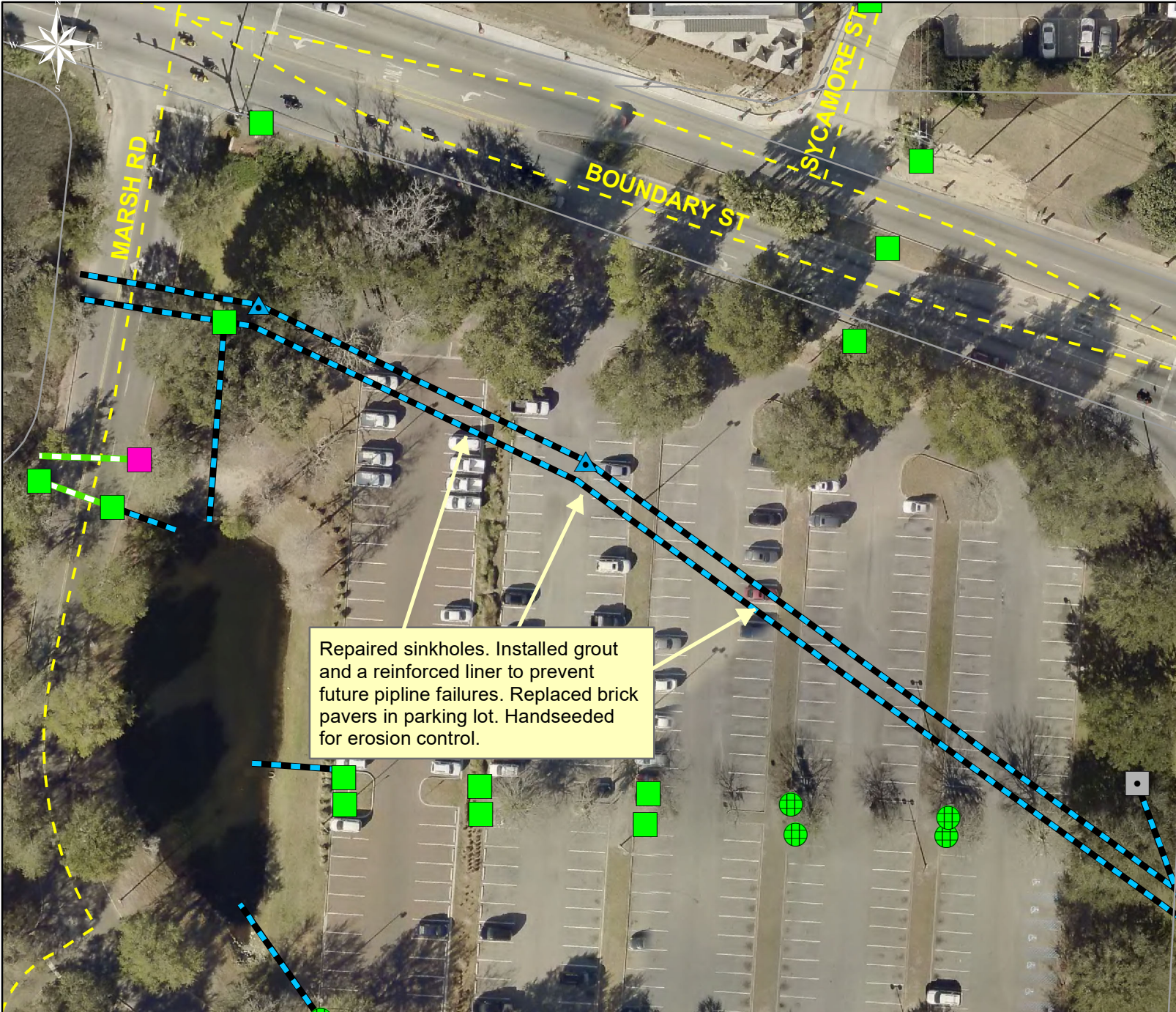


1 inch = 67 feet

Prepared By: BC Stormwater Management Utility

Date Print: 09/30/19

File: C:\project summaries map\Beaufort County Government Center Map #1_2018-564A



Project: Beaufort
 County
 Government
 Center Map #2

Activity: Routine/
 Preventive
 Maintenance














Project #:
 2018-564A

Township/SW Dist:
 City Of Beaufort/1

Completed:
 August 2019

Legend

Drainage Type

-  Access Pipe
-  Bleeder Pipe
-  Channel Pipe
-  Channel
-  Stream
-  Crossline Pipe
-  Driveway Pipe
-  Lateral
-  Lateral Pipe
-  River
-  Road Pipe
-  Roadside
-  Roadside Pipe



1 inch = 67 feet

Prepared By: BC Stormwater Management Utility

Date Print: 09/30/19

File: C:\project summaries map\Beaufort County Government Center Map #2_2018-564A